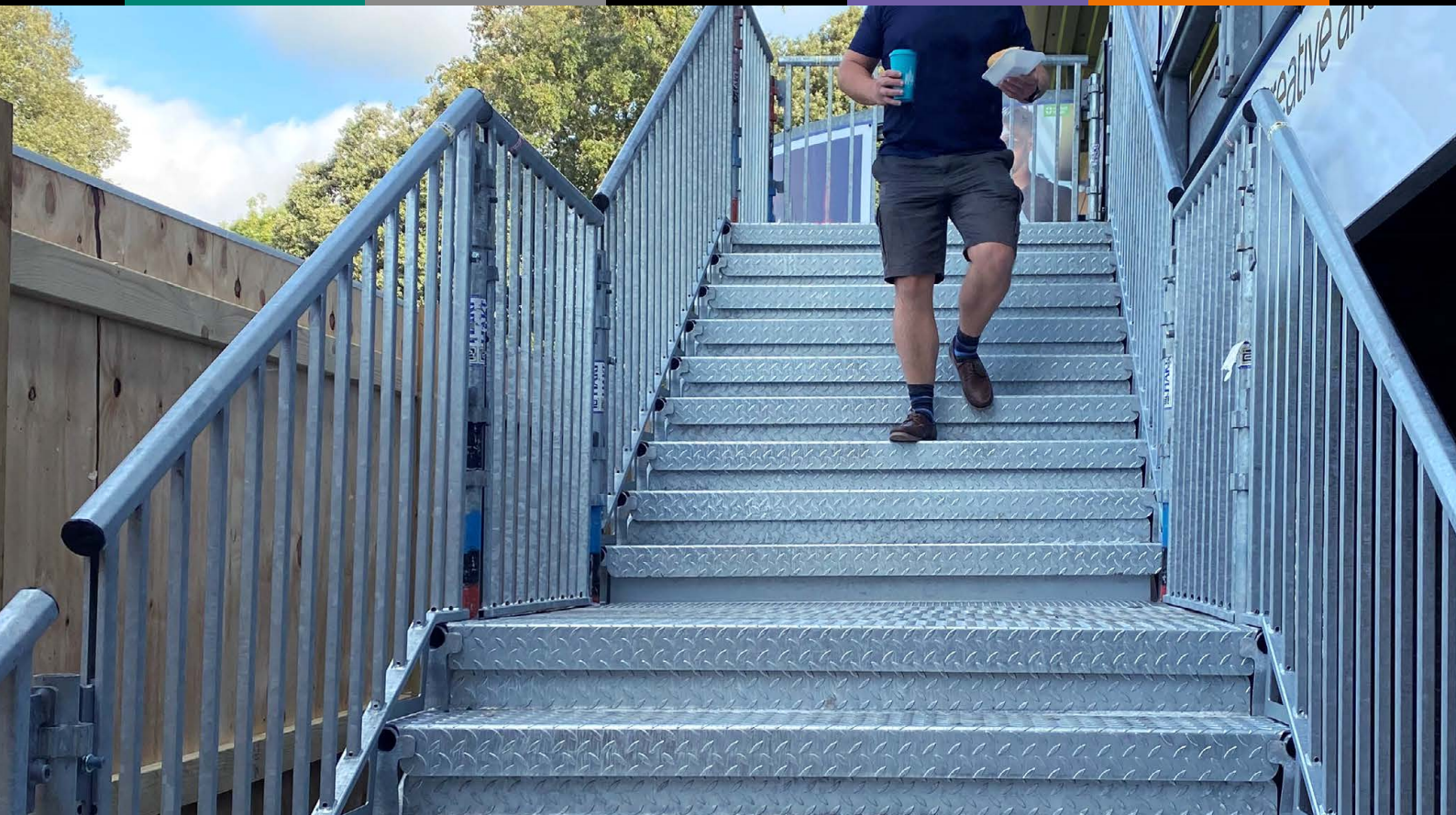


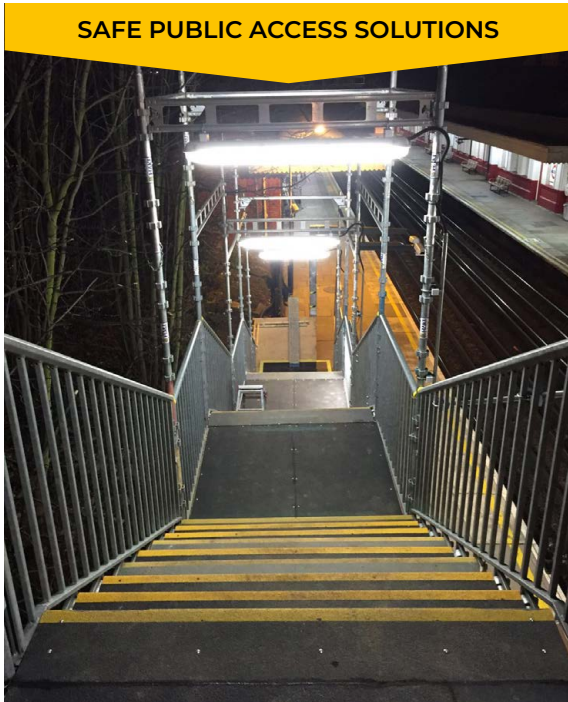
● INSIGHT ● INNOVATION ● INCLUSIVITY ● INVESTMENT ● INTEGRITY ●



Nationwide Coverage Provided by 12 Enigma Service Centres around the UK

Public Access Solutions

Enigma Industrial Services have extensive experience in providing safe temporary public access solutions in public spaces like museums, visitor attractions, railway stations, airports, hospitals, sports stadiums, historic heritage sites and schools. By assisting organisations to install sufficient public access provision to prevent the likelihood of falls and enable efficient crowd management by controlling foot traffic. Our in-house design and engineering team work closely with clients to provide cost-effective solutions.



Efficient systems help to keep footfall moving safely, and ensure minimal disruption to the customer journey or surrounding environment, whilst helping to prevent overcrowding or congestion. We also, liaise with clients to ensure disabled access is never diminished and that any sensory learning experiences are not interrupted.

We design and implement safe compliant solutions in accordance with health and safety regulations for emergency exit escape routes in the event of a fire or building evacuation. The HAKI public access stair can accommodate up-to 36 people per lift at any single time and can be integrated with cladding to provide a sophisticated barrier to physical risk.

Ventilation retraction systems can be integrated into solutions and help to control air quality and remove dust or contaminants from the environment during projects caused by construction or refurbishment work.

Enigma always utilise value engineering methodology to provide adaptable bespoke cost-saving economical solutions that complement the existing building structure without compromising on safety.

We can provide additional protection solutions against adverse weather conditions that can cause moisture damage to the internal or exterior integrity of structures or ruin replacement building materials during construction or restoration works.

The installation of lightweight, toughened plastic fire-resistant cladding panels help to protect the general public from falling objects and improves safety. Cladding also helps to reduce noise and can be used to create swing doors to provide security when the site is not open.

We help clients to improve on-site public access by assisting them with introducing one-way systems and crowd control measures, that can also help with preventing the spread of Covid-19 by enabling social distancing.

- 

Safe Emergency Evacuation
- 

High footfall safety to prevent congestion
- 

Safe disabled access or egress
- 

Fire resistant cladding
- 

Improve on-site security
- 

Adverse weather protection
- 

Provide a safe barrier to physical risk

Case Studies



Sandhurst Military College

Principle Contractor: Interserve

Value of scaffold subcontract: - Not Disclosed

To support the Royal Military Academy, Sandhurst, restoration project, Enigma erected scaffolding around the full perimeter with a specialist protective wrap displaying a printed image of the Academy building exterior facade. This enabled the Royal Military Academy to remain open and continue the Sovereign's parade when Officer cadets graduate from the Academy with the queen in attendance.



Brockholes Wetlands Visitor Centre

Principle Contractor: Mansell

Value of scaffold subcontract: - £200k

Provision of scaffolding to construct the new Brockholes Wetlands Nature Reserve Visitor Centre whilst the existing centre remained open to the general public. Enigma had to be considerate with the surrounding conservation area and wildlife to minimise any environmental impact when planning works and during erection and dismantling.



City of Manchester Stadium

Principle Contractor: Interserve

Value of scaffold subcontract: - £750k

Enigma provided the support structure for the temporary seating at one end of the City of Manchester Stadium, now the Etihad, for the Commonwealth Games in 2002.



Railway Station Stairs

Principle Contractor: Interserve

Value of scaffold subcontract: - Various Projects

Enigma has experience providing access support for station and bridge upgrades, including York, Glasgow and Edinburgh, where we supported the major redevelopments of these stations. With the provision of public access stairs and temporary bridges to minimise passenger disruption.

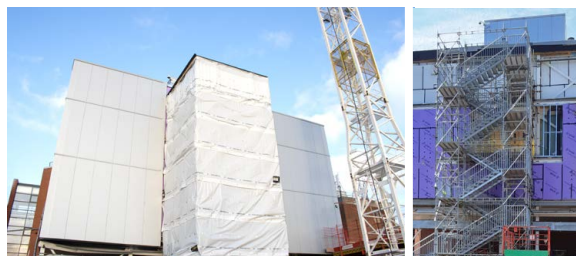


Coronavirus Testing Centre

Principle Contractor: Integrated Health Projects (VINCI)

Value of scaffold subcontract: - £600k

Public access was provided to temporary buildings located at The Christie NHS Foundation Trust during the pandemic, to enable rapid Covid testing for the general public. The temporary ramp access structure was quickly designed in-house and constructed by Enigma on-site to prevent delays.



The Christie Hospital

Principle Contractor: VINCI & Sir Robert McAlpine

Value of scaffold subcontract: - £600k

A fully enclosed temporary public access staircase has been installed at the hospital's Withington Campus to provide an emergency pedestrian exit, whilst the new £150m nine-storey state of the art Paterson Building is constructed.

In-House Design & Engineering Service

The Enigma In-house design and engineering team boast a wealth of experience and are industry-leading in scaffolding design, collaboratively working with our clients, to provide innovative solutions and technical expertise to solve complex challenges. By utilising the latest design and planning software along with our knowledge and experience, we can offer economical solutions to complex access requirements. Our design team have gained an invaluable reputation for excellence by delivering safe, reliable projects and are trusted by many national construction organisations.



We work closely with clients to make things possible by applying our know-how to solving problems.

Providing Safe Access during Restoration Projects

At Enigma, we understand that restoring and refurbishing structures, or historic buildings containing many unforeseen challenges can be a costly experience and stressful time, often with the loss of income due to not being able to provide safe site access for visitors throughout the duration of works. Enigma collaborates with many leading construction contractors, building conservation specialists and government heritage & preservation agencies throughout the UK to provide safe public access solutions that minimise disruption throughout restoration projects.



Coity Castle

Principle Contractor: John Weavers

Value of scaffold subcontract: - Not Disclosed

Provision of scaffolding and access solutions for major £1.8m CADW conservation project to preserve the 12th-century historic castle. Also, to help protect the historic site, all conservation project work is meticulously planned, CAD drawings and 3D photogrammetry of the monument are utilised to create preliminary plans.



Cameron House

Principle Contractor: ISG

Value of scaffold subcontract: - £1.5m

Provision of temporary access and fully encapsulated structure to restore a 17th Century hotel on Loch Lomond due to extensive fire damage. Enigma continued to work on-site with additional phases to construct additional accommodation, a conference centre and leisure facilities whilst guests remained in the main hotel building.



Old Tweed Bridge

Principle Contractor: Amey

Value of scaffold subcontract: - £350k

Provision of a fully encapsulated scaffold to enable easy access to the walls and underside for major refurbishment work to stabilise masonry on the historic bridge crossing the River Tweed. The bridge has been the main link between Selkirk and Galashiels for over 140 years.



Trinity Tower

Principle Contractor: To be appointed

Value of scaffold subcontract: - £150k

Scaffold structure erected around the main entrance to permit safe access to the building whilst protecting both residents and passers-by from any potential falling debris due to recent adverse weather conditions causing stonework to become loose and fall from the historic building's front elevation facade.

Case Studies



McEwan Hall

Principle Contractor: Interserve

Value of scaffold subcontract: - £400k

Temporary access solutions were provided to restore the historic building that included essential works on the foundations and the renovation of external stonework. Additionally, a new entrance pavilion and visitor spaces were constructed, along with a new corner stairwell, providing access to all levels.



Anchor Line Hotel

Principle Contractor: ISG

Value of scaffold subcontract: - £350k

Provision of suspended scaffolding to historic Glasgow city centre building enabled safe pedestrian access to continue below in the busy street. The building was fully refurbished and converted into a contemporary 64-bed apart-hotel.



Marine Hotel

Principle Contractor: John Fulton

Value of scaffold subcontract: - £250k

Enigma provided independent perimeter accesses, a customised loading bay, roof saddle designs and bridged area solutions for the extensive refurbishment transformation. The project was carefully planned with phases to minimise any disruption caused to guests.



Dean Castle

Principle Contractor: CBC Stone

Value of scaffold subcontract: - Not Disclosed

£5m stonework restoration project of a 600-year-old historic castle tourist attraction site utilising the innovative K2 scaffold system. The project was supported by the National Lottery Heritage Fund and Historic Environment Scotland.

Project Case Study Library

We pride ourselves on being a versatile reactive organisation that can operate efficiently and quickly adapt to changing circumstances by successfully helping clients to complete projects within time scales and budget constraints. For more information on the projects we have completed throughout the UK, please read our case studies online and visit:

www.enigma-is.com/projects/

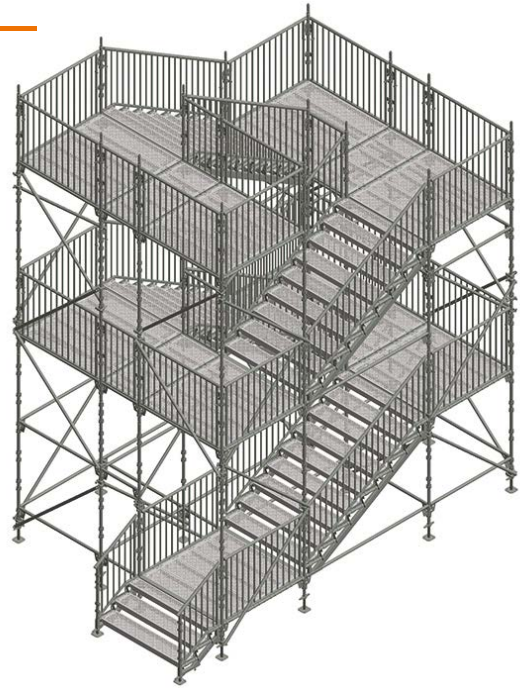


Public Access Stairs

HAKI Public Access Stairs can handle high volumes of footfall to ensure safety in accordance with leading UK standards, the 2.5m wide stairs can accommodate up to 36 people per lift at any one time. With specialist additional design features including child-safe, adjustable handrails and slip-resistant solid steel decks helping to protect the public against falling from a height. In-line and spiral configurations are available to suit all applications, providing flexibility with specialist project requirements. HAKI Public Access Stairs are an ideal temporary access solution in public spaces like railway stations, airports, sports stadiums, and schools.

HAKI Public Access Stairs can also, be easily combined with the HAKI Bridge System and Cladding to provide temporary footbridges. The stairs are suitable for the safe evacuation of large numbers of people and are ideal for high-trafficked projects.

HAKI Public Access Stairs are the perfect solution for every situation and can be fully integrated with HAKI Universal Scaffolding components for guaranteed safety and maximum adaptability.



Cladding System

HAKI cladding system is the ideal solution for site hoarding, stair and bridge enclosures, to reduce noise and improve public safety. By preventing falling objects from temporary stairs, bridges or working platforms. The lightweight toughened plastic fire-resistant panels are compatible with both scaffolding systems and traditional tube & fitting scaffolding.

The cladding system can also, be used to create swing doors for stair towers, to provide security when not in use. One man installation is possible with the specifically designed HAKI cladding track.



Temporary Roof

The HAKITEC Temporary Roof system is the perfect economical solution to help keep your work environment safe and dry. All HAKITEC Temporary Roof systems have very few components and are quick and easy to assemble, it's also possible to build the roof at ground level and crane into position for greater flexibility on-site. Customers benefit from increased productivity without the negative impact of adverse weather conditions preventing work to continue. Also using weather protection will help avoid the risk of trapping moisture in the structure resulting in damage that can become extremely expensive to rectify once the building has been completed.



Bridge System

The 2m wide HAKI Bridge System (HBS) provides safe temporary railway, road or river crossings for pedestrians while infrastructure projects are ongoing and can be built off-site and positioned within just 15 minutes. Designed following leading British and European standards, the system can handle impressive loadings of up to 7.5kN/m² with a maximum span of up to 30m dependent on the imposed live load.

The HAKI Cladding System can also be used to enclose the bridge to offer further safety benefits, including the risk of falling objects and falls from height. Whilst also providing noise reduction and protecting the general public from bad weather or high winds.





Contract Scaffolding



Insulation



Protective Coating



Scaffold Hire & Sales



Industrial Cleaning



Head Office:

Hawthorn House
Woodlands Park
Ashton Road
Newton-le-Willows
WA12 0HF

Tel: 0330 678 1199
Email: info@enigma-is.com
Web: www.enigma-is.com

Follow us:



UK DISTRIBUTION PARTNERSHIP

Nationwide Coverage

Provided by 12 Enigma Service Centres around the UK



STOCK

Enigma operates one of the UK's largest scaffolding asset bases with over 2,000 scaffolding and related products available to purchase or hire.

SERVICE

With over 85 year's industry knowledge & experience, Enigma provides an accredited safety first professional service. Ensuring clients benefit from convenient access to simpler and safer systemised solutions and reduced lead times for projects nationwide.

SUPPORT

The In-house QSHE and design & engineering teams provide clients with economical solutions for complex challenges. Including ongoing training, and technical support services through knowledge and resource-sharing practices.

DELIVERY & COLLECTION

Collect stock, or have it delivered, from Enigma Industrial Services depots strategically located around the UK.