

**Inputs**


1. Leadership



2. Energy &amp; Carbon Management



3. Waste Management



4. Partnership &amp; Engagement



5. Sustainable Procurement

**Enigma Mission**

Our mission is to drive sustainability throughout the company by leveraging best practice and by engaging with suppliers, stakeholders and related sectors on impactful activities.

**Sustainability Vision**

Enigma-IS is committed to making a positive impact through outstanding environmental sustainability performance.

**Strategic Values**

Enigma Industrial Services is committed to our corporate values of Insight, Innovation, Inclusivity, Investment and Integrity, thereby always working in a fair and responsible manor whilst improving the quality of life for our employees and contractors, and the local communities we work within.

**Enigma Principles**

To build on service delivery to enable positive change through research and education.

To build on the positive impact of sustainability actions at local and national level through communication, collaboration and partnership.

To create a culture where stakeholders are engaged, empowered and supported in improving personal and company sustainability practice.

To protect and enhance the environment by reducing our direct environmental impact.


**Outputs**


6. Customers



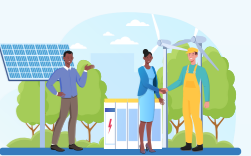
7. Stakeholders



8. Local Communities



9. Suppliers



10. Employees

**Sustainability Management Strategy**
*Sustainable growth for the company*
